

2nd Announcement



Korean
Stroke
Society

www.jkjsc.or.kr

A vibrant watercolor illustration of a globe. The globe is rendered in shades of blue and green, with various cityscapes and architectural landmarks drawn around it. On the left, there are traditional Japanese buildings and a pagoda. On the right, there are modern skyscrapers and a tower. The background features large, stylized floral patterns in light blue and white. The overall style is artistic and celebratory.

The 7th JAPANESE-KOREAN Joint Stroke Conference

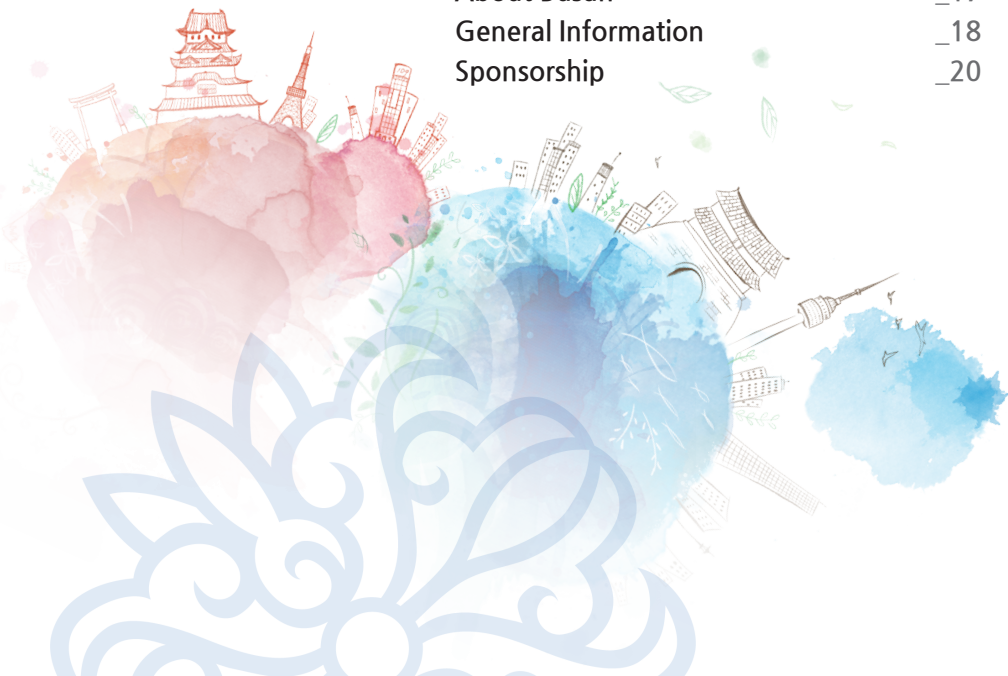
October 22(THU)-24(SAT), 2015
Haeundae Grand Hotel, Busan, Korea



The 7th JAPANESE-KOREAN Joint Stroke Conference

2nd Announcement **CONTENTS**

Welcome to Busan	_03
Conference Information	_04
Program at a Glance	_05
Invited Speakers	_06
Scientific Program	_08
Call for Abstracts	_11
Registration	_12
Hotel Information & Room Rates	_13
Transportation	_14
About Busan	_17
General Information	_18
Sponsorship	_20



Welcome to Busan

Dear colleagues,

On behalf of the Korean Stroke Society, we are delighted to invite you to the 7th Japanese-Korean Joint Stroke Conference (JKJSC) in Busan, Korea, from October 22 to 24, 2015.

The Scientific Committee has prepared meticulously organized the program to ensure that the JKJSC 2015 is a great success. It will cover a variety of topics that illustrate the latest advances in the field of stroke.

The JKJSC 2015 and other committee provide an invaluable opportunity to meet and network with colleagues from Japan, Korea.

We encourage you to participate actively in the discussions and hope the meeting helps in the exchange of information and development of new cooperation to improve the care of stroke patients. Please take advantage of the various networking opportunities the Conference offers.

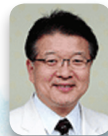
In keeping with the slogan 'Dynamic Busan', the venue Busan is the country's main port city serving as the world's fifth busiest international seaport, as well as a significant gateway between Korea and Japan. Bursting with magnificent mountains, sea vistas and fresh seafood, the city has been full of visitors from all over the world every year. Especially, its superb beaches, such as Haeundae, Songdo and Gwangalli Beaches, have become a hot place to hold various festivals focusing on international reach and significance. With its increasing reputation, Busan also has got settled as an international convention destination in the world.

The carefully selected programs and the irresistible venue, however, will be nothing without your active participation and support.

Promising you the most valuable and memorable conference, we cordially hope you will join us in the dynamic city Busan in October 2015.



Byung-Chul Lee, M.D., Ph.D.
Congress Chair, The Korean Stroke Society



Chin-Sang Chung, M.D., Ph.D.
President, The Korean Stroke Society

Conference Information

Organization

Congress Chair	
Byung-Chul Lee	
President	Vice-President
Chin-Sang Chung	Ji Hoe Heo
General Secretary	Treasurer
Gyeong-Moon Kim	Dong-Eog Kim
Executive Committee	
Jong Sung Kim	Norihiro Suzuki
Byung-Woo Yoon	Masahiro Abo
Joung-Ho Rha	Yoshiaki Itoh
Yong-Seok Lee	Kazuo Kitagawa
Hee-Joon Bae	Hiroyuki Kinouchi
Min Ho Chun	Satoshi Kuroda
Dae-Chul Suh	Nobuhito Saito
Seung-Hoon Lee	Shunya Takizawa
Chul-Ho Sohn	Teiji Tominaga
Oh Young Bang	Kazunori Toyoda
Jeong Eun Kim	Joji Nakagawara
Jei Kim	Kiyohiro Houkin
Pyoung Jeon	Masayasu Matsumoto
Keun-Sik Hong	Shinichi Yoshimura
Honorary Members	
Jae-Kyu Roh	Yukito shinohara
Kwang Ho Lee	Takenori Yamaguchi
Dae-Hee Han	Shotai Kobayashi
Beum Saeng Kim	Akira Ogawa
Local Committee	
Kyung-Ho Yu	Jun Hong Lee
Jaseong Koo	Jae Kwan Cha
Sung-Bom Pyun	Jun Lee
Moon-Ku Han	Seul-Ki Jeong
Woo-Keun Seo	Kyung-Yul Lee

Date

October 22 (Thu) ~ 24 (Sat), 2015

Important Dates

- Call for Abstract July 1, 2015
- Abstract Submission Due August 20, 2015
- Early Registration Due September 25, 2015

Official Language

English

Website

<http://www.jkjsc.or.kr/>

Venue

Haeundae Grand Hotel

Address: Haeundae-Beach Road 217, Haeundae-Gu, Busan 48093, Korea

Tel: +82-51-740-0114 Fax: +82-51-740-0115



Secretariat of The 7th JKJSC

c/o LS Communications

#103, Gangdong Santevill, Cheonhodaero 1065, Gangdong-gu, Seoul 05336, Korea

Phone: +82-2-476-6717~8 Fax: +82-2-476-6719

General Inquiry: secretariat@jkjsc.or.kr

Scientific Program: abstract@jkjsc.or.kr

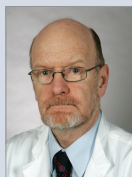
Program at a Glance

Time	October 22 (Thu), 2015		Time	October 23 (Fri), 2015		Time	October 24 (Sat), 2015	
	Room A	Room B		Room A	Room B		Room A	Room B
7:00			7:00	Satellite Symposium 1		7:00	Satellite Symposium 6	
8:00			8:00	Intermission		8:00	Intermission	
9:00			9:00	Symposium 1: What should we do in the new era of endovascular therapy?		9:00	Scientific Session 2	Scientific Session 3
10:00			10:00	Coffee Break		10:00	Coffee Break	
11:00			11:00	Symposium 2: New mission on stroke prevention	Scientific Session 1	11:00	Symposium 5: Stroke pathophysiology and translational medicine	Symposium 6: Novel strategy on stroke outcome
12:00			12:00	Intermission		12:00	Intermission	
13:00			13:00	Satellite Symposium 2	Satellite Symposium 3	13:00	Poster Presentation 2	
14:00			14:00	Symposium 3: Our own problem in Japan and Korea: Moyamoya disease - Beyond the present understanding	Symposium 4: Current and future concept of stroke care system	14:00		
15:00			15:00	Coffee Break		15:00		
16:00			16:00	Satellite Symposium 4		16:00		
17:00			17:00	Satellite Symposium 5		17:00		
18:00			18:00	Poster Presentation 1		18:00		
19:00			19:00	Banquet		19:00		
		Executive Board Meeting						

Scientific Program

The Scientific Program Committee has prepared meticulously organized program to ensure that the 7th JKJSC is a resounding success. It will cover the latest issued topics: Endovascular therapy, Stroke prevention, Moyamoya disease, Stroke care system, Stroke pathophysiology and translational medicine, Novel strategy on stroke outcome. The 7th JKJSC also provides an invaluable opportunity to meet and network with the colleagues from Japan and Korea.

Invited Speakers



Markku Kaste
University of Helsinki, Finland



Hiroshi Yamagami
National Cerebral and
Cardiovascular Center, Japan



Kazunori Toyoda
National Cerebral and
Cardiovascular Center, Japan



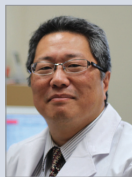
Kazuo Kitagawa
Tokyo Women's Medical University,
Japan



Kazuo Minematsu
National Cerebral and
Cardiovascular Center, Japan



Kazutoshi Nishiyama
Kitasato University School of
Medicine, Japan



Masahiro Abo
The Jikei University School of
Medicine, Japan



Masayasu Matsumoto
Hiroshima University, Japan



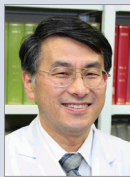
Meigen Liu
Keio University School of Medicine,
Japan



Miki Fujimura
Tohoku University Graduate School
of Medicine, Japan



Satoshi Kuroda
University of Toyama, Japan



Shunya Takizawa
Tokai University School of Medicine,
Japan



Seong-Ho Koh
Hanyang University, Korea



Dong-Eog Kim
Dongguk University, Korea



Jong S. Kim
University of Ulsan, Korea



Oh Young Bang
Sungkyunkwan University, Korea



Nam-Jong Paik
Seoul National University, Korea



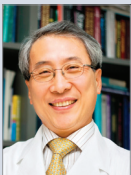
Dae-Chul Suh
University of Ulsan, Korea



Mi-Sun Oh
Hallym University, Korea



Chang-Wan Oh
Seoul National University, Korea



Byung-Woo Yoon
Seoul National University, Korea



Seung-Hoon Lee
Seoul National University, Korea



Ji Hoe Heo
Yonsei University, Korea

07:30-08:30	Satellite Symposium 1	
08:30-08:50	Intermission	
Symposium 1: What should we do in the new era of endovascular therapy?		Byung-Chul Lee (Department of Neurology, Hallym University, Korea)
		Norihiro Suzuki (Department of Neurology, Keio University School of Medicine, Japan)
08:50-09:40	Acute care of patients with ischemic stroke	Markku Kaste (Department of Neurology, University of Helsinki, Finland)
09:40-10:05	Past, present and future of endovascular therapy in Korea	Dae Chul Suh (Department of Radiology, University of Ulsan, Korea)
10:05-10:30	Endovascular therapy for acute ischemic stroke in Japan; Past and future	Hiroshi Yamagami (Department of Neurology, National Cerebral and Cardiovascular Center, Japan)
10:30-10:50	Coffee Break	
Symposium 2: New mission on stroke prevention		Joung-Ho Rha (Department of Neurology, Inha University, Korea)
		Shinichiro Uchiyama (Clinical Research Center for Medicine, International University of Health and Welfare, Japan)
10:50-11:15	High-risk groups in patients with established cardioembolic stroke	Ji Hoe Heo (Department of Neurology, Yonsei University, Korea)
11:15-11:40	Chronic kidney disease as an emerging risk factor for stroke	Kazunori Toyoda (Department of Cerebrovascular Medicine and Neurology, National Cerebral and Cardiovascular Center, Japan)
11:40-12:05	Dual antiplatelet therapy for stroke prevention: How can we maximize the efficacy?	Seung-Hoon Lee (Department of Neurology, Seoul National University, Korea)
12:05-12:30	Results and interpretation of J-STARS trial	Masayasu Matsumoto (Department of Neurology, Hiroshima University, Japan)
12:30-12:40	Intermission	
12:40-13:40	Satellite Symposium 2	
13:40-13:50	Intermission	
Symposium 3: Our own problem in Japan and Korea: Moyamoya disease - Beyond the present understanding		Jae-Kyu Roh (Department of Neurology, Korean Armed Forces Capital Hospital, Korea)
		Joji Nakagawara (Department of Investigative Radiology, National Cerebral and Cardiovascular Center, Japan)

Room A

13:50-14:15	Genetics of moyamoya disease: Recent study using genetic engineered mice of RNF213: A moyamoya disease susceptibility gene	Miki Fujimura (Department of Neurosurgery, Tohoku University, Japan)
14:15-14:40	Novel MR diagnosis of moyamoya disease	Satoshi Kuroda (Department of Neurosurgery, Toyama University, Japan)
14:40-15:05	Epidemiology in Korea and long-term effect of surgery in moyamoya disease	Chang-Wan Oh (Department of Neurosurgery, Seoul National University, Korea)
15:05-15:30	Isolated MCA disease in young patients: What is this?	Jong S. Kim (Department of Neurology, University of Ulsan, Korea)
15:30-15:50	Coffee Break	
15:50-16:50	Satellite Symposium 4	
16:50-17:00	Intermission	
17:00-17:50	Satellite Symposium 5	
17:50-18:00	Intermission	
18:00-19:00	Poster Presentation 1 (@ Poster Room)	
19:00-21:00	Banquet	

October 23

Room B

10:50-12:30	Scientific Session 1	
12:30-12:40	Intermission	
12:40-13:40	Satellite Symposium 3	
13:40-13:50	Intermission	
Symposium 4: Current and future concept of stroke care system		Chin-Sang Chung (Department of Neurology, Sungkyunkwan University, Korea)
		Kiyohiro Houkin (Department of Neurosurgery, Hokkaido University, Japan)
13:50-14:15	National strategy on stroke care system in Japan	Kazuo Minematsu (Department of Cerebrovascular Medicine and Neurology, National Cerebral and Cardiovascular Center, Japan)
14:15-14:40	Development of patient delivery system: Brain saver program in Anyang city	Mi-Sun Oh (Department of Neurology, Hallym University, Korea)
14:40-15:05	How could multidisciplinary comprehensive stroke care centers in Japan be successful?	Kazutoshi Nishiyama (Department of Neurology, Kitasato University School of Medicine, Japan)
15:05-15:30	Clinical Research Center for Stroke (CRCS) project in Korea	Byung-Woo Yoon (Department of Neurology, Seoul National University, Korea)



October 24

Room A

07:30-08:30	Satellite Symposium 6	
08:30-08:50	Intermission	
08:50-10:30	Scientific Session 2	
10:30-10:50	Coffee Break	
Symposium 5: Stroke pathophysiology and translational medicine		Gyeong-Moon Kim (Department of Neurology, Sungkyunkwan University, Korea)
		Hiroyuki Kinouchi (Department of Neurosurgery, University of Yamanashi, Japan)
10:50-11:15	Neurovascular protection in stroke	Shunya Takizawa (Department of Neurology, Tokai University School of Medicine, Japan)
11:15-11:40	Biomarker and biomaker in stroke	Oh Young Bang (Department of Neurology, Sungkyunkwan University, Korea)
11:40-12:05	Post-ischemic inflammation: Potential therapeutic target for ischemic stroke	Kazuo Kitagawa (Department of Neurology, Tokyo Women's Medical University, Japan)
12:05-12:30	Quantitative interpretation of white matter hyperintensity to affect stroke outcomes with differential impact and mechanisms depending on stroke subtypes	Dong-Eog Kim (Department of Neurology, Dongguk University, Korea)
12:30-12:40	Intermission	
12:40-13:40	Poster Presentation 2 (@ Poster Room)	

October 24

Room B

08:50-10:30	Scientific Session 3	
10:30-10:50	Coffee Break	
Symposium 6: Novel strategy on stroke outcome		Jongmin Lee (Department of Rehabilitation, Konkuk University Medical Center, Korea)
		Yoshiaki Itoh (Department of Neurology, Osaka City University, Japan)
10:50-11:15	How useful is imaging in predicting outcomes in rehabilitation of post-stroke aphasia?	Masahiro Abo (Department of Rehabilitation Medicine, The Jikei University, Japan)
11:15-11:40	Stem cell therapy in chronic ischemic stroke patients: Between fact and fantasy	Seong-Ho Koh (Department of Neurology, Hanyang University, Korea)
11:40-12:05	Restoration of post-stroke upper limb paralysis with BMI neurorehabilitation	Meigen Liu (Department of Rehabilitation Medicine, Keio University, Japan)
12:05-12:30	Tele-rehabilitation for stroke	Nam-Jong Paik (Department of Rehabilitation, Seoul National University, Korea)

Call for Abstracts

● Scientific Session Topics

- Epidemiology
- Pathophysiology of Stroke
- Risk Factors and Prevention of Stroke
- Neuroimaging
- Acute Management & Prognosis of Stroke
- Interventional Neuroradiology
- Basic Neuroscience in Stroke
- Rehabilitation & Restorative Therapy in Stroke

● Presentation Type

When submitting abstracts, the submitter is required to select the presentation type as Oral, Poster or Either.

● Submission Guidelines

1. All abstracts must be submitted via the conference website ONLY (www.jkjsc.or.kr). Abstract sent by fax or e-mail will not be accepted.
2. All abstracts should be written in English.
3. When you submit your abstracts online, it will be automatically edited according to the designated format.
4. It is the responsibility of the presenting author and the submitter to review the submission status & information and correct them. Submitters are responsible for any typo error in the abstract.
5. The abstract should be limited to;
 - 400 words (text only)
 - 300 words and 1 image or table
6. The abstracts should be organized according to the each abstract form.
7. An acknowledgement of the receipt of the abstract submission will be sent automatically to the submitter by e-mail upon the on-line submission.
8. An acceptance of abstract will be notified by e-mail to the presenting author.
9. It is recommended for the oral presenters to submit their CV after abstract review. Please submit your CV via the e-mail(abstract@jkjsc.or.kr) after receiving the confirm letter. (Optional)

● Important Dates

- Call for abstracts July 1, 2015
- Abstract Submission Due August 20, 2015

Registration

● On-line registration

ONLY On-line registration is available at the conference website.

- The registration will not be completed until you pay the registration fee.
- The confirmation of registration will be sent via e-mail.

Registration Fees

Category	Early Rate (until September 25, 2015)	
M.D	KRW 250,000	USD 250
Trainee	KRW 120,000	USD 120
Allied Health Professionals*	KRW 50,000	USD 50
Accompanying Person	KRW 50,000	USD 50

* Allied Health Professionals: nurse, paramedical person and technician etc.

● Participant's Registration fee Includes

- Participation in all Scientific Sessions
- Entrance to the exhibition area
- Luncheon & Congress Banquet
- Printed material of the conference (Program Book & Abstracts)
- Coffee breaks


● Important Dates

- Early Registration Due September 25, 2015
- On-site Registration October 23-24, 2015


Hotel Information & Room Rates

Class	Hotel	Room type	Room Rate	Distance from Venue
★★★★★	Haeundae Grand Hotel  (http://www.haeundaegrandhotel.com/main.asp)	City View	229,900 KRW	Venue
		Beach View	266,200 KRW	
		Suite Room	500,000 KRW	

* Above quoted rates include SVC & VAT.
 * Breakfast rate is KRW per person.

★★★★★	Paradise Hotel Busan  (https://www.busanparadisehotel.co.kr/main.do?lang=en)	Deluxe	City View	290,400 KRW	15 min by foot
			City View (Executive)	338,800 KRW	
			Ocean View	326,700 KRW	
			Ocean View (Executive)	375,100 KRW	

* Above quoted rates include SVC & VAT.
 * Executive option rate includes services of Excutive Lounge & Ocean Spa Cimer.
 * Breakfast rate is KRW 29,040 (Buffet) per person.

★★★	ibis buget Ambassador Busan Haeundae  (https://ibisbudget.ambatelen.com/haeundae/main.amb)	Standard Double	134,200 KRW	5 min by foot
		Family Room (Double & Bunk Bed)	156,200 KRW	

* Above quoted rates include SVC & VAT.
 * Breakfast rate is KRW per person.

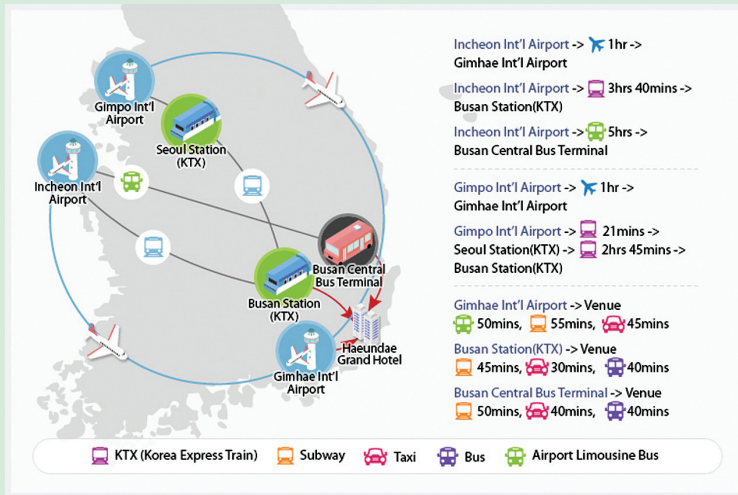
● Booking & Payment Conditions

- The room rate are fixed in Korean Won, and rates in US\$ are subject to change according to foreign exchange rates.
- As rooms will be assigned **on a first-come, first-served basis**, early reservation is recommended. Room availability and rates may not be guaranteed.
- Early check-in and late check-out changes will be applied to each hotel's policy.

● How to Reserve

Visit the conference [website http://www.jkjsc.or.kr/](http://www.jkjsc.or.kr/) for the hotel reservation. The hotel reservation is ONLY available at the conference website.

Transportation



● By Air : ▶ Gimhae Int'l Airport

International Line

Country	City	Duration	Weekly	Country	City	Duration	Weekly
Japan	Nagoya	1h 30min	7 times	China	Macau	3h 45min	3 times
	Tokyo(Narita)	2h 20min	35 times		Guangzhou	3h 40min	4 times
	Sapporo	2h 55min	3 times		Nanjing	1h 55min	3 times
	Okinawa	1h 55min			Beijing	2h 30min	19 times
	Osaka(Kansai)	1h 30min	35 times		Shanghai(Pudong)	1h 50min	26 times
	Fukuoka	55min			Xian	2h 50min	2 times
Philippines	Manila	3h 55min	18 times		Shenyang	2h 10min	8 times
	Cebu	4h 20min	13 times		Yanji	2h 50min	5 times
	Kalibo	5h 45min	8 times		Yantai	1h 40min	3 times
Taiwan	Kaohsiung	2h 30min	5 times		Zhangjiajie	3h 15min	2 times
	Taipei(Taoyuan)	2h 30min	25 times		Qingdao	1h 40min	18 times
Thailand	Bangkok	5h 50min	19 times		Hangzhou	2h	2 times
Malaysia	Kuala Lumpur	6h 15min	4 times		Hongkong	3h 5min	27 times

* Schedule may be subject to change.

Domestic Line

City		Duration	Weekly	City		Duration	Weekly
Incheon	International Line	1h	8 times	Gimpo (Seoul)	Domestic Line	1h	27 times

※ Schedule may be subject to change.

● By Train

A new line of direct KTX has been opened, which enables tourists to travel from Incheon Int'l Airport to Busan without transfer. For online reservation, please visit http://www.letskorail.com/ebizbf/EbizBfIndex_eng.do

※ Schedule and price may be subject to change.

KTX (Korea Train Express): Incheon Int'l Airport ▶ Busan Station

Incheon Airport to Busan station approximately takes 3hr 40min. Please visit the Korail website for KTX reservation.

Time Table

KTX Time Table (INCHEON AIRPORT TO BUSAN)					
TRAIN NO.	TRAIN TYPE	FROM	TO	DEP. TIME	ARR. TIME
115	KTX	Incheon Airport	Busan	6:55	10:47
125	KTX	Incheon Airport	Busan	9:07	12:41
139	KTX	Incheon Airport	Busan	12:07	15:43
163	KTX	Incheon Airport	Busan	16:30	20:14
173	KTX	Incheon Airport	Busan	18:35	22:12
181	KTX	Incheon Airport	Busan	20:35	00:12

KTX Time Table (BUSAN TO INCHEON AIRPORT)					
TRAIN NO.	TRAIN TYPE	FROM	TO	DEP. TIME	ARR. TIME
102	KTX	Busan	Incheon Airport	5:00	8:42
114	KTX	Busan	Incheon Airport	7:55	11:42
132	KTX	Busan	Incheon Airport	12:00	15:41
144	KTX	Busan	Incheon Airport	14:05	17:52
158	KTX	Busan	Incheon Airport	16:30	20:07

Fare

Division	Going Trip					
	1st Class		Standard Class		Standing/Not assigned	
	Adult	Child	Adult	Child	Adult	Child
Preceding	KRW 100,900 (Approx. USD 87)	KRW 64,800 (Approx. USD 56)	KRW 72,100 (Approx. USD 62)	KRW 36,000 (Approx. USD 31)	KRW 68,500 (Approx. USD 59)	KRW 34,200 (Approx. USD 30)

KTX (Korea Train Express): Gimpo Int'l Airport ▶ Busan Station

By AREX (Airport Railroad Train): Gimpo Int'l Airport ▶ Seoul Station

Please take AREX (Airport Railroad Train) at Gimpo (or Incheon) International Airport Station and get off at Seoul Station (KTX).

※ Please visit the website of AREX(Airport Railroad Train) for the detailed schedule. Go to Korail website



By KTX (Korea Train Express): Seoul Station ▶ Busan Station

Use KTX of Gyeongbu Line and get off at Busan Station. Please check the exact departure time, train number and the seat. It will take approximately 3 hrs.

Category	1st Class		Standard Class		Standing/Not Assigned	
	Adult	Child	Adult	Child	Adult	Child
One-Way Fare(KRW)	KRW 83,700 (Approx. USD 72)	KRW 53,800 (Approx. USD 46)	KRW 59,800 (Approx. USD 52)	KRW 29,900 (Approx. USD 26)	KRW 56,800 (Approx. USD 49)	KRW 28,400 (Approx. USD 25)

About Busan

Busan, a bustling city of approximately 3.6 million residents, is located on the southeastern tip of the Korean peninsula. The size of Busan is 769.82km² which is 0.8% of the whole land of the Korean Peninsula. The natural environment of Busan is a perfect example of harmony between mountains, rivers and sea. Its geography includes a coastline with superb beaches and scenic cliffs, mountains which provide excellent hiking and extraordinary views, and hot springs scattered throughout the city. Busan enjoys four distinct seasons and a temperate climate that never gets too hot or too cold.

Busan is the second largest city in Korea. Its deep harbor and gentle tides have allowed it to grow into the largest container handling port in the country and the fifth largest in the world. The city's natural endowments and rich history have resulted in Busan's increasing reputation as a world class city of tourism and culture, and it is also becoming renowned as an international convention destination.

Haeundae Beach

Haeundae boasts an ideal wide, sandy beach and shallow waters with gentle ripples. At the mention of 'Busan', 'Haeundae' is the first to spring to mind, and it surely is the city's representative spot. In particular, with the buildings and upscale hotels along the shoreline, the beach is well-known for its modern feel.



Dalmaji Hill

Located just beyond Haeundae, Dalmaji Road is a small, serene walkway on the corner to Songjeong Beach (on the slope of Wausan, or Mount Wau) and has a treasure of beautiful cherry blossoms and pine trees. On the nights of the full moon the moon gently reflects off the sea, offering perfect views. The many modern art galleries and pretty cafes give the place its nickname of 'Culture Street'.



Nurimaru APEC House

Since the APEC Summit Meeting in 2005, the Nurimaru APEC House has been the host of high quality international conferences and today the popular tourist spot still sees a daily 4000-5000 visitors. The Korean name 'nurimaru' means 'summit of the world' and the building is modelled on the traditional Korean jeongja, or pavilion. Visitors can feel the presence of the summit meeting inside the building.



General Information

Climate

Korea's climate is regarded as a continental climate from a temperate standpoint and a monsoonal climate from a precipitation standpoint. The climate of Korea is characterized by four distinct seasons: spring, summer, fall, and winter. The average temperature during the conference is between 8°C and 19°C which will be perfectly pleasant and comfortable.



Food

Eating out is one of the great pleasures of visiting Korea, a country famous for its diverse native dishes. Korean cuisine is nutritious, well balanced and low in calories as it involves a wide variety of vegetables and fermented foods. Bulgogi (Marinated, barbecued beef) and Bibimbap (Boiled rice mixed with vegetables) are the most famous.



Money & Currency

The unit of Korean currency is the Won (₩). Coin denominations are ₩10, ₩50, ₩100 and ₩500. Banknotes are ₩1,000, ₩5,000, ₩10,000 and ₩50,000. The exchange rate is approximately USD 1 to KRW 1,170 as of July 21, 2015.

- Currency exchange: Foreign banknotes and traveler's check can be exchanged at foreign exchange banks and other authorized moneychangers.
- Traveler's checks: Accepted, but may be difficult to change in smaller towns. To avoid additional exchange rate charges, travelers are advised to take Traveler's check in US Dollars.
- Banking hours: Monday to Friday 09:00 - 16:00, ATM operating hours 08:00-22:00



Credit Card

Diners Club, Visa, American Express and MasterCard are widely accepted at major hotels, shops and restaurants in the larger cities. Check with your credit card company for details

of merchant acceptability and other services which may be available.

Liability and Insurance

The organizing committee will take no liability for personal injuries sustained by, or for loss or damage to property belonging to conference participants, either during or as a result of the conference. It is, therefore, advised that participants arrange their own personal health, accident and travel insurance. Emergency call numbers in Korea are 112 for police and 119 for fire/rescue and hospital service.

Time Zone

Korean time is 9 hours ahead of Greenwich Mean Time (GMT+9).

Telephone Call

A local call costs ₩70 for three minutes. For international call, first dial the international dialing code (001, 002 or 00700), then the country code, followed by the area code, and then the phone number. You can rent a cellular phone at the Incheon International Airport and Gimhae International Airport.

1330 Korea Travel Phone

Korea Travel Phone 1330, operated by the Korea Tourism Organization, is Korea's leading tourism information hotline, providing a variety of information on travel in Korea to both Korean and foreign tourists.

Business Hour

Government office hours are usually from 9:00am to 6:00pm on weekdays and closed on weekends. Banks are open from 9:00am to 4:00pm on weekdays and closed on Saturday and Sunday. Major stores are open every day from 10:30am to 8:00pm including Sundays

Electricity

The standard electricity supply is 220-volts AC/60 cycles. Most hotels may provide outlet converters for 110 and 220 volts. It is advised to check with the hotel beforehand.

Emergency Calls

International SOS Korea provides a 24-hour emergency service for participants.

- 1339 : For medical emergencies/First aid patient
- 119 : Emergencies for fire / Rescue & Hospital service
- 112 : Police

For more information, please visit: <http://english.visitkorea.or.kr>

Sponsorship

PLATINUM

SANOFI 

 Bristol-Myers Squibb

 Boehringer
Ingelheim

 Bayer HealthCare

GOLD

 Otsuka

 MSD
Be well

 DAEWOONG

SILVER


Daiichi-Sankyo

 Pfizer Korea


Takeda Pharmaceuticals Korea CO., LTD.



**The 7th JAPANESE-KOREAN
Joint Stroke Conference**

c/o LS Communications

#103, Gangdong Santevill, Cheonhodaero 1065, Gangdong-gu,
Seoul, 05336, Korea

Tel : +82-2-476-6717-8 Fax : +82-2-476-6719

E-mail : secretariat@jkjsc.or.kr Website : <http://www.jkjsc.or.kr>